

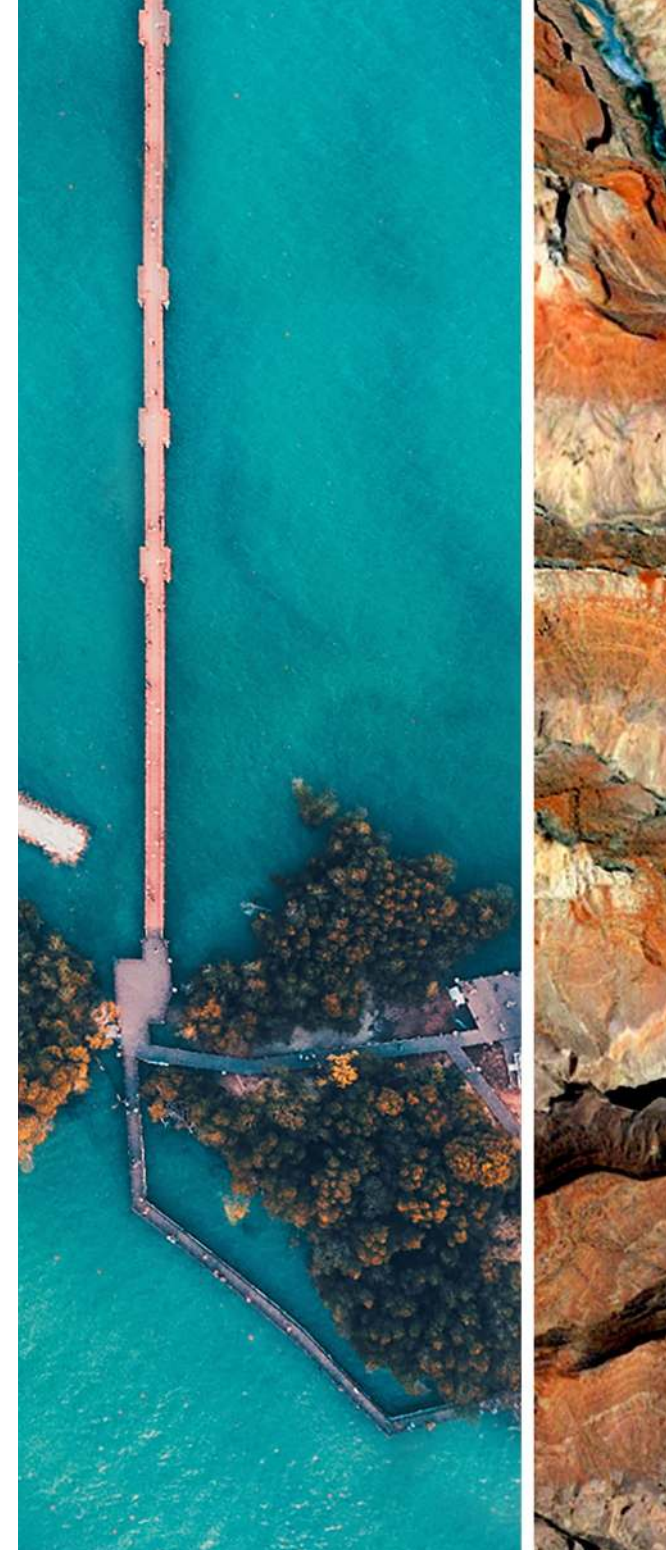
# RENAULT DUSTER



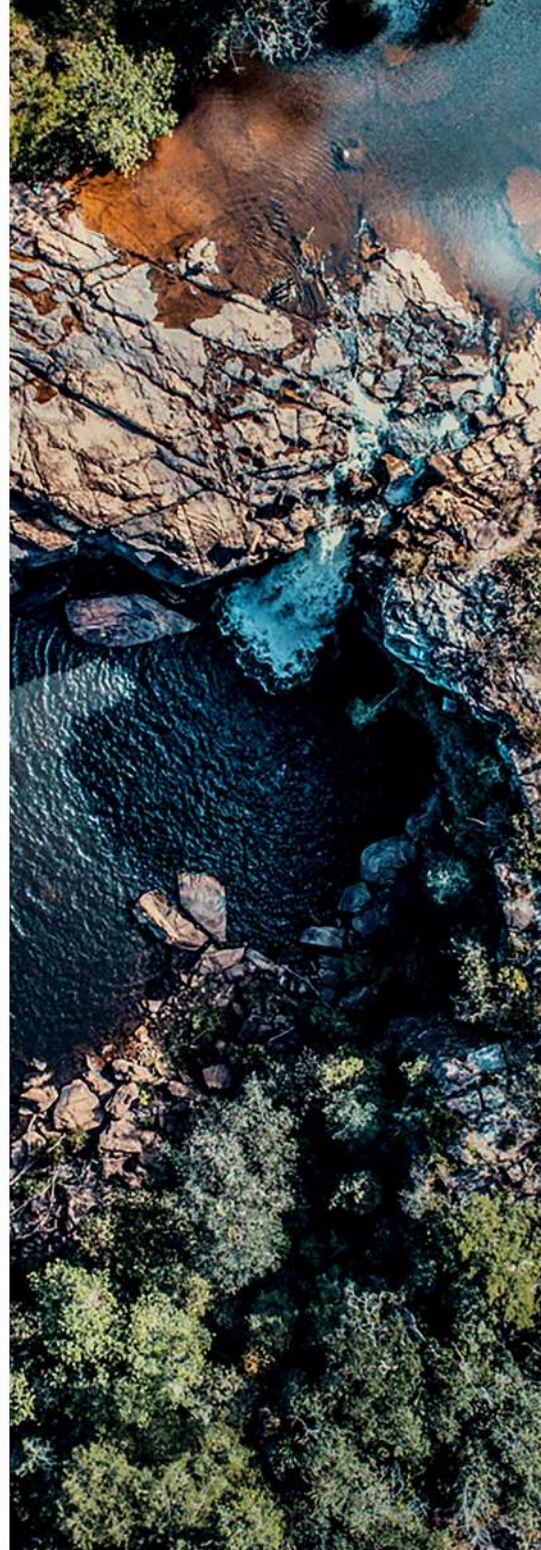
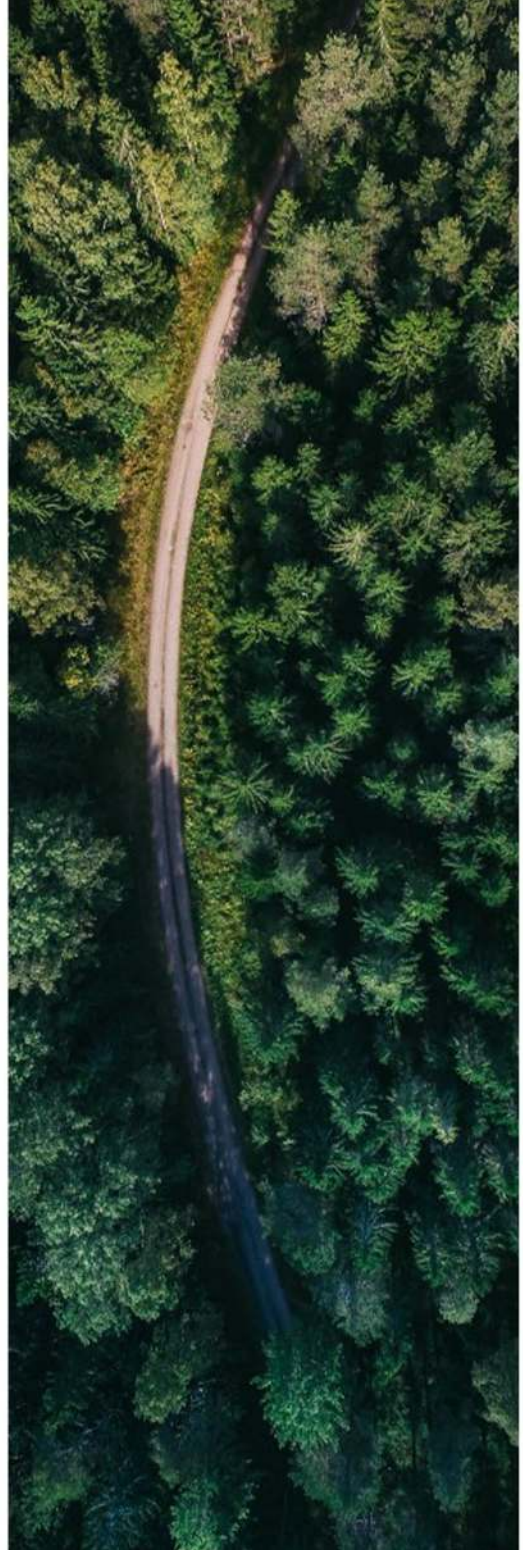


# contents

- Exterior Design
- Interior Design
- Space Layout
- City Driving
- Off-road Driving
- Engines
- Safety tech
- Colours
- Model Range
- Accessories
- Vehicle Specifications
- Equipment and Options
- Dimensions
- The Renault Promise











# **RENAULT DUSTER**

the unstoppable SUV equipped to go further











**robust  
off-roader  
looks**

Built for adventure, the Renault Duster is a vehicle of distinctive styling. The tone is set by the aggressive lines and chrome trim of the grille, alongside a raised waistline and powerful C-shaped light signature.

These strong, powerful lines are enhanced by 16" or 17" alloy wheel rims that underline the car's character. A car to open new horizons.



## a cabin designed for you

The interior of the Renault Duster reflects its generous, adventure-seeking nature. The spacious cabin is bright and reassuring. The driver\* and passenger seats provide plenty of support to ensure comfort on your journey. The upholstery features a high-quality finish, as does the dashboard, where particular emphasis was placed on ergonomic design. Behind the steering wheel, adjustable for height and reach, TFT digital meters invite you on an inspirational and illuminated tour of discovery.

\* With armrest and lumbar adjustment.





Features and images may vary and be optional depending on model, and are subject to change without notice.









## heading for the wide open spaces

What could be more exciting than setting out on an adventure with your family or friends? It takes just a few seconds to adapt the modular interior layout of Renault Duster to your needs or requirements: the rear bench seat features a 1/3-2/3 split-fold function, while the boot boasts record loading capacity\*.

The Duster features an array of storage compartments around the cabin, from the doors to the seat backs via the central console.

\*478 dm<sup>3</sup> in the 4x2 version.







## easier city driving

Drive with an easy mind. Use the **hands-free card\*** to unlock the doors automatically as you approach the vehicle. It also allows you to start and stop the vehicle without getting the key out of your pocket, and automatically locks the car as you walk away.

On the road, the **blind spot warning\*** picks up any hidden vehicles, while the **speed limiter** and **cruise control** functions help you concentrate on your driving. Delivering real support, in the city and on the open road!

\*Standard on Prestige model







Features and images may vary and be optional depending on model, and are subject to change without notice.





Features and images may vary and be optional depending on model, and are subject to change without notice.

## harnessing the spirit of adventure

Nothing stops the Renault Duster, neither sharp slopes, nor steep tracks.

Hill Start Assist and Hill Descent Control let you drive anywhere with ease.

With the **4x4 Monitor\***, you can even check the pitch and roll angles of your SUV at any time. Explore without limits.

The **Transmission Mode Selector\*** allows you to Switch between 3 driving modes. **2WD Mode** - engine torque distributed to the front wheels. **Automatic Mode** - distribution of engine torque over the four wheels depending on grip conditions. **Lock Mode** - engine torque distributed to all four wheels.

\*Standard on 4x4 model





## powerful, yet economical

Rediscover effortless driving with the Renault Duster. This trendsetter is available with two fuel options and three engine options.

Choose between the petrol powered 1.6L 16V and two versions of our incredible 1.5dCi turbo diesel engine.



### **DCi power** Performance and comfort

Driving the Duster 1.5dCi is an amazing experience where driving confidence and comfort are the keywords in all situations, including the most extreme.

The diesel 1.5dCi 4x2's engine has outputs of 66kW and 210Nm and consumes from just 5.1L/100km. The 4x2 EDC and 4x4 manual version has outputs of 80kW and 250Nm with consumption from only 4.8L/100km.

### **EDC** Dual-Clutch gearbox

For greater comfort and pleasure, the 6-speed dual-clutch EDC automatic gearbox is

available with the 1.5dCi diesel engine.

Upshifting is fast and smooth, with no jerking or loss in acceleration. Fuel consumption is comparable to that of the manual version

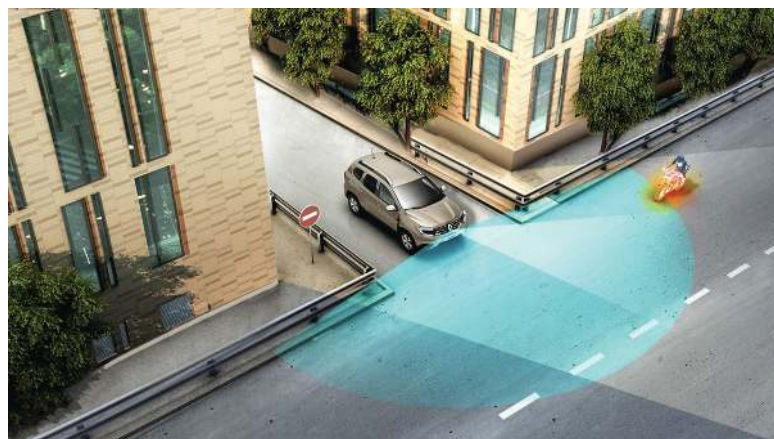
from only 4.8L/100km.



always looking  
out for you



**(ABS) Anti-lock Braking System** with **(EBD) Electronic Brake Force Distribution**, in conjunction with **(EBA) Emergency Brake Assist**: makes it possible to maintain control over the trajectory in the event of heavy braking.



**MultiView Camera.\*** Connected to the MediaNav system, the MultiView Camera shows the images from Duster's four on-board cameras. It is triggered by reverse gear or by a simple touch of the dedicated button.

\*Standard on 4x4 and Prestige model



**Rear Park Distance Control.** To make parking manoeuvres easier. The parking distance control system warns you of obstacles situated behind the vehicle by a sequence of beeps which speed up the closer you are to them.



**(HSA) Hill Start Assist.** Starting the car on steep slopes is no longer a worry. When you take your foot off the brake, hill-starting assist takes over and holds the vehicle steady for two seconds. This gives you time to accelerate normally without stalling or rolling back.



# chromo zone



WHITE (NM)



PLATINUM SILVER (MP)



COMET GREY (MP)



PEARLESCENT BLACK (MP)



DUNE BEIGE (MP)



COSMOS BLUE (MP)



ATACAMA ORANGE (MP)



FUSION RED (MP)

# creative workshop

## EXPRESSION



Interior environment



16" Steel Wheels



LED DRL - Daytime running lights



Radio/CD/MP3 player with USB and Bluetooth®

### Exterior Design

- Automatic LED daytime running lights
- Foglamps
- Grille with chrome trim
- Black outside door handles
- Black door mirrors
- Black longitudinal roof bars
- 16" Steel wheels

### Interior

- Dark Carbon fabric upholstery
- 3-Seat rear bench
- Black Interior door handles
- Black Front door grab handles

### Safety

- ABS (Anti-lock Braking System) + EBA (Emergency Brake Assist)
- Electronic Stability Control (ESC)(1) with Hill Start Assist
- Driver's front airbag
- Front passenger airbag
- 3rd rear 3-point seat belt (reel)

### Driving and Control Equipment

- Cruise control and speed limiter

### Comfort

- Manual air conditioning
- Electric windows front only
- Key operated central locking

### Multimedia and Technology

- Plug & Music: Radio/CD/MP3, USB and Aux, Bluetooth® telephone with steering wheel controls

### Options

- Metallic paint



# creative workshop

## DYNAMIQUE 4X4



Interior environment



16" Alloy wheels



Media Nav with Apple CarPlay and Android Auto



4x4 Monitor

### Dynamique 4x4 = Expression +

#### Exterior Design

- Body coloured door handles
- 16" Alloy wheels

#### Interior

- 1/3-2/3 folding rear bench seatback
- Satin Chrome Interior door handles
- Black with Chrome detailing front door grab handles

#### Safety

- Side airbag

#### Driving and Control Equipment

- Hill Descent Control
- Rear parking sensors
- Reversing camera
- MultiView Camera
- Blind spot warning

#### Comfort

- Automatic air conditioning
- Rear electric windows
- Electrically operated door mirrors
- Steering wheel adjustable for height and reach
- Height-adjustable driver's seat

#### Multimedia and Technology

- Media Nav Evolution: 7" touch screen with radio, jack and USB ports, audio streaming, Bluetooth® telephone connectivity with steering column controls, 4x4 information and ECO driving information
- Smartphone replication with Apple Car Play® and Android Auto®

#### Options

- Metallic paint
- Leather upholstery

## TECHROAD



Interior environment



17" Alloy wheels



### TechRoad = Dynamique +

#### Exterior Design

- 17" Alloy wheels with blue centre cap

#### Interior

- Seats with blue detailing
- Interior with blue detailing

#### Options

- Metallic paint
- Leather upholstery



Media Nav with Apple CarPlay and Android Auto



Reversing camera



# creative workshop

## PRESTIGE



Interior environment



17" Alloy wheels



MultiView Camera



Optional Leather upholstery

### Prestige = TechRoad +

#### Exterior Design

- Chrome door mirrors
- Black and Satin Chrome longitudinal roof bars
- Front/rear skidplate add-on with satin chrome appearance paint

#### Safety

- Blind spot warning

#### Comfort

- Hands-free key card
- Height-adjustable driver's seat with lumbar adjustment and armrest

#### Multimedia and Technology

- MultiView Camera

#### Options

- Metallic paint
- Leather upholstery

# accessories



## body protection

### 01 Roof Spot lights

Enjoy the drive in complete safety!  
The roof spot lights increase your visibility of the road. They elegantly complement the front of your vehicle.

82 01 698 539

### 02 Oval nudge bar

Protect your vehicle's bumpers while enhancing your Duster's muscular design. Both in town and on steep paths, an essential way of expressing your adventurous spirit!

200 000 2918

### 03 Styling bars

Chrome bars that enhance the exterior looks of the Duster.

82 01 700 243 (Right and left sides)  
82 01 700 247 (Rear)

### 04 Side step bar

Enhance the robust look of your vehicle while protecting it from the small knocks of everyday life.

200 000 2919

### 05 Mud flaps

Effectively protect the underbody of your vehicle from water splashes, mud splatters and flying gravel. Set of two mudguards.

82 01 700 279 (Front)  
82 01 700 276 (Rear)



03



05

Actual accessories may vary from photographs shown and are subject to change without notice.



# accessories



## loading and carrying

### 06 Bicycle rack on towbar

Attaches quickly to a towbar, without any adjustment, providing the safest and most practical way of transporting up to three bikes. Foldable and tiltable, it always leaves the boot accessible, even when the bikes are installed on the bicycle rack.

77 11 577 330

### 07 Swan neck towbar pack

The Swan Neck Towbar maintains the aesthetic appeal of your vehicle.

82 01 698 535 (Towbar)

82 01 698 536 (Fitting Kit)

82 01 700 128 (Harness)

### 08 Roof Box

Increase the loading volume of your vehicle and travel without compromise! Practical, robust and aesthetically appealing – it has all the qualities you need. Secured with a lock to protect your possessions inside. Colour: black embossed.

77 11 575 524 (380 L)

77 11 575 525 (480 L)

### 09 Roof Bars

Fast and easy to assemble, they are ideal for carrying a bike rack, ski rack, or roofbox, and increasing the loading capacity of your vehicle. Set of two bars.

82 01 407 085



# loading and carrying

## 10 Storage nets

Ideal for arranging the interior of your boot. Fitted to the dimensions of your vehicle, they ensure your belongings stay in place during your trips.

82 01 452 834 (Vertical)

82 01 452 833 (Horizontal)

## 12 Boot liner

Ideal for transporting items that might soil the vehicle. Effectively protects the original carpet, perfectly adapted to the shape of the boot in your vehicle.

82 01 699 847 (4x2)

82 01 699 849 (4x4)

## 11 EasiFlex modular boot protection

Non-slip and waterproof, it is essential for protecting your vehicle's boot and transporting bulky items that could soil the interior!

82 01 699 858



10



11



12



# accessories

## 13 Rubber mats

Waterproof and easy to maintain, they protect the lustre of your interior while extending its life.

200 000 2923

## 14 Rubber boot mat

Superior quality and easy to maintain, extremely practical on a day-to-day basis.

200 000 2922

## 15 Wind Deflectors

Enhances the exterior's appeal while protecting from rain and wind while driving with window partially down.

82 01 700 223 (Front)

82 01 700 225 (Rear)

## 16 Renault headrest hanger

Renault hanger on headrest  
Very useful for carefully hanging your clothes from the back of the front seat. Removable and easy to install, it will soon become an everyday essential.

82 01 705 509



# freewheel: vehicle specifications

ENGINE	1.6 16V 4x2	1.5 dCi 4x2	1.5 dCi 4x2 EDC	1.5 dCi 4x4
Emission control standard and type	Euro 5	Euro 4	Euro 3	Euro 5
Engine air supply	Normally aspirated	Turbocharger	Turbocharger	Turbocharger
Capacity (cm³)	1,598	1,461	1,461	1,461
Number of cylinders/valves	4 in-line/16	4 in-line/8	4 in-line/8	4 in-line/8
Peak power kW	84	66	80	80
Peak power rating (rpm)	5,500	4,000	4,000	4,000
Peak torque Nm (Nm)	156	210	250	260
Peak torque rating (rpm)	4,000	1,750	1,750	1,750
Type of injection	Sequential multi-point	Direct Common Rail + multi-injection	Direct Common Rail + multi-injection	Direct Common Rail + multi-injection
Fuel	Petrol	Diesel	Diesel	Diesel
Particulate filter	-	Yes	Yes	Yes
Eco Mode	Yes	Yes	Yes	Yes
GEARBOX				
Gearbox type	Manual 5-Speed	Manual 5-Speed	EDC Auto 6-Speed	Manual 6-Speed
STEERING				
Type	Electric Power Steering	Electric Power Steering	Electric Power Steering	Electric Power Steering
Turning circle (metres)	10.14	10.14	10.14	10.14
WHEELS AND TYRES				
Wheel size rims	6.5J 16	7J 17	7J 17	6.5J 16
Tyre size	215/65 R16	215/60 R17	215/60 R17	215/65 R16
BRAKING				
ABS	Standard	Standard	Standard	Standard
EBA (Emergency Braking Assistance)	Linked to ABS	Linked to ABS	Linked to ABS	Linked to ABS
Electronic brake effort proportioning system	Linked to ABS	Linked to ABS	Linked to ABS	Linked to ABS
ESC (Electronic Stability Control)	With traction control	With traction control	With traction control	With traction control
PERFORMANCE				
Top speed (km/h)	167	155	169	168
0-100km/h (s)	11.0	14.8	11.9	12.5
400m stopping distance (s)	17.8	19.5	18.7	18.8
1,000m stopping distance (s)	33.2	36.5	33.8	34.6
CONSUMPTION AND EMISSIONS				
CO <sub>2</sub> (g/km)	162	135	126	138
Urban cycle (cold start - L/100km)	8.8	5.7	5.2	5.6
Extra-urban cycle (L/100 km)	5.9	4.9	4.5	5.0
Full cycle (L/100 km)	7.0	5.1	4.8	5.2
CAPACITY				
Fuel tank (litres)	50	50	50	50
Boot Volume	478	478	478	414
WEIGHT (KG)				
Tare weight (kg)	1,170	1,217	1,276	1,241
Gross Vehicle Weight (GVW) (kg)	1,759	1,811	1,875	1,913
Gross Train Weight (GTW) (kg)	2,959	3,011	3,075	3,413
Max. payload (kg)	533	596	550	582
Max. braked trailer (within the GTW limit) (kg)	1,200	1,200	1,200	1,500
Max. unbraked trailer (kg)	585	609	638	621

\* Fuel consumption and CO<sub>2</sub> emissions are certified using a standard, regulated method. It is identical for all manufacturers and allows vehicles to be compared.  
 Fuel consumption in actual usage depends on the vehicle's usage conditions and equipment and the driver's driving style.



# equipment & options

	EXPRESSION	DYNAMIQUE 4X4	TECHROAD	PRESTIGE
<b>EXTERIOR APPEARANCE</b>				
Automatic LED daytime running lights	•	•	•	•
Grille with chrome trim	•	•	•	•
Outside door handles	Black	Body-coloured	Body-coloured	Body-coloured
Black door mirrors	•	•	•	-
Chrome door mirrors	-	-	-	•
Longitudinal roof bars	Black	Black and Satin Chrome	Black and Satin Chrome	Black and Satin Chrome
Front/rear skidplate add-on with satin chrome appearance paint	-	-	•	•
16" Steel wheels	•	-	-	-
16" Alloy wheels	-	•	-	-
17" Alloy wheels	-	-	•	•
Metallic paint	o	o	o	o
<b>SEATS AND INTERIOR ENVIRONMENTS</b>				
Interior door handles	Black	Satin Chrome	Satin Chrome	Satin Chrome
Front door grab handles	Black	Black with chrome detailing	Black with blue detailing	Black with chrome detailing
1/3-2/3 folding rear bench seatback	-	•	•	•
Leather upholstery	-	o	o	o
Seats with blue detailing	-	-	•	-
Interior with blue detailing	-	-	•	-
<b>ACTIVE AND PASSIVE SAFETY</b>				
ABS (Anti-lock Braking System) + EBA (Emergency Brake Assist)	•	•	•	•
Electronic Stability Control (ESC)(I) with Hill Start Assist	•	•	•	•
Driver's front airbag	•	•	•	•
Front passenger airbag	•	•	•	•
Side airbag	-	•	•	•
3rd rear 3-point seat belt (reel)	•	•	•	•
Blind spot warning	-	•	-	•
<b>DRIVING AND CONTROL EQUIPMENT</b>				
Hill Descent Control	-	•	-	-
Cruise control and speed limiter	•	•	•	•
Rear parking sensors	-	•	•	•
Reversing camera	-	•	•	•
MultiView camera	-	•	-	•

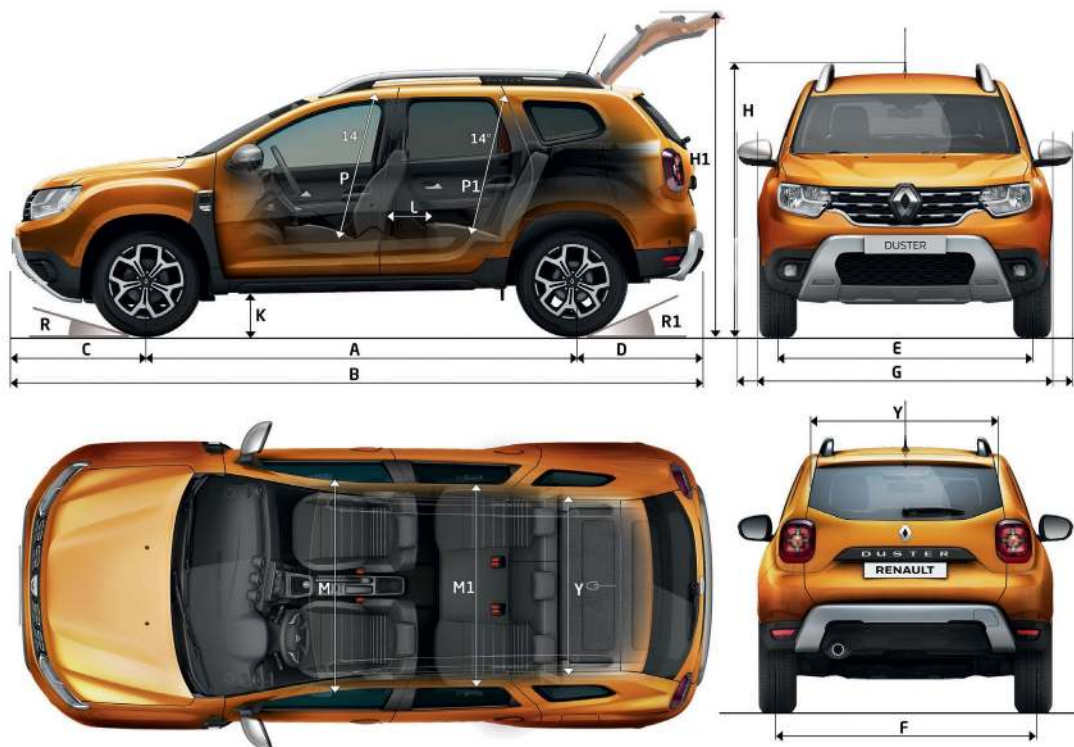
Standard • Not Available - Optional o

	EXPRESSION	DYNAMIQUE 4X4	TECHROAD	PRESTIGE
<b>VISIBILITY</b>				
Fog lamps	•	•	•	•
Electrically operated door mirrors	-	•	•	•
<b>COMFORT</b>				
Air conditioning	Manual	Automatic	Automatic	Automatic
Electric windows front/rear	•/-	•/•	•/•	•/•
Hands-free key card	-	-	-	•
Steering wheel adjustable for height and reach	•	•	•	•
Height-adjustable driver's seat	-	•	•	•
Height-adjustable driver's seat with lumbar adjustment and armrest	-	-	-	•
<b>INTELLIGENT TECHNOLOGIES</b>				
Media Nav Evolution: 7" touch screen with radio, jack and USB ports, audio streaming, Bluetooth® telephone connectivity with steering column controls, and ECO driving information	-	4x4 information	•	•
Plug & Music: radio CD MP3, USB and jack ports, Bluetooth® telephone with steering wheel controls	•	-	-	-
Smartphone replication with Apple Car Play® and Android Auto®	-	•	•	•
<b>WARRANTY / SERVICE / MAINTENANCE</b>				
5 Year / 150 000km mechanical warranty	•	•	•	•
6 Year anti-corrosion warranty	•	•	•	•
15 000km service intervals	•	•	•	•
3 Year / 45 000km service plan	•	•	•	•

Standard • Not Available - Optional ◯



# dimensions



BOOT VOLUME (L)		4x2	4x4
Total boot volume (L)		478	414
DIMENSIONS (mm)		4x2	4x4
A	Wheelbase	2,674	2,676
B	Overall length	4,341	4,341
C	Front overhang	842	841
D	Rear overhang	826	824
E	Front track	1,563	1,563
F	Rear track	1,570	1,580
G	Overall width without/with door mirrors	1,804/2,052	1,804/2,052
H	Unladen height	1,693	1,682

# the Renault Promise

## Parts Availability

---

**Renault ranks amongst South Africa's motor industry leaders in affordable parts pricing.**

We strive to ensure an excellent level of parts availability at our Renault Dealerships.

## 5 Year / 150 000km Warranty

---

**With a 5 year / 150 000km warranty\*, you're always covered.**

Should you experience any mechanical failure resulting from a defect in an original part(s) on your new Renault vehicle, Renault will cover the cost of repairs for a period of 5 years or 150 000km.

## Service / Maintenance Plans

---

**We offer standard or tailor-made options to suit your needs.**

### Service Plan

Having a Service Plan reduces the costs of servicing your new car. The price of the Service Plan is fixed when you buy your car, so you won't have to worry about inflationary price increases on labour or parts; for the duration of your Service Plan.

### Maintenance Plan

Upgrade to a full Maintenance Plan, a comprehensive package that not only covers all your service, maintenance and labour costs over a contract period, but also gives you greater peace-of-mind.

## 24HR Roadside Assistance

---

**Whatever the emergency, we'll always be there.**

Because your personal safety is of utmost importance to us, help is one phone call away.

Simply dial 0861 736 2858 for assistance or for a team to be dispatched to you. Our 24 hour Roadside Assistance Plan covers all new Renault vehicles for a period of 5 years or 150 000km with an option for extension.

\*Warranty does not cover wear and tear items such as shock absorbers, brake pads, clutch, cam belt, etc.



## Contacts to Remember

Customer Care / Renault Assist:  
0861 RENAULT (0861 736 2858)

Renault on the web:  
[www.renault.co.za](http://www.renault.co.za)



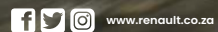
Experience the **RENAULT DUSTER**  
at [www.renault.co.za](http://www.renault.co.za)

Printed April 2021 © CUBI DESIGN • 011 454 8160 • 0421 6778

Renault Customer Care Direct Line: 0861 RENAULT or 0861 736 2858

Renault South Africa (Pty) Ltd. reserves the right to modify its models without notice, likewise their characteristics, equipment and accessories.

Renault recommends **elf**



**5**  
YEAR WARRANTY  
150 000 KM